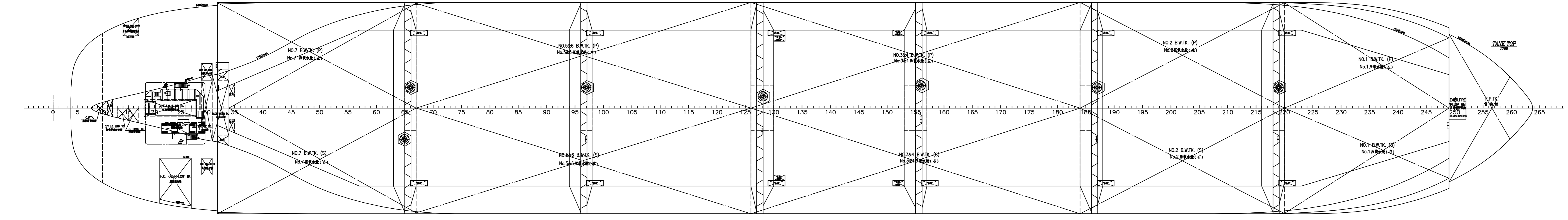
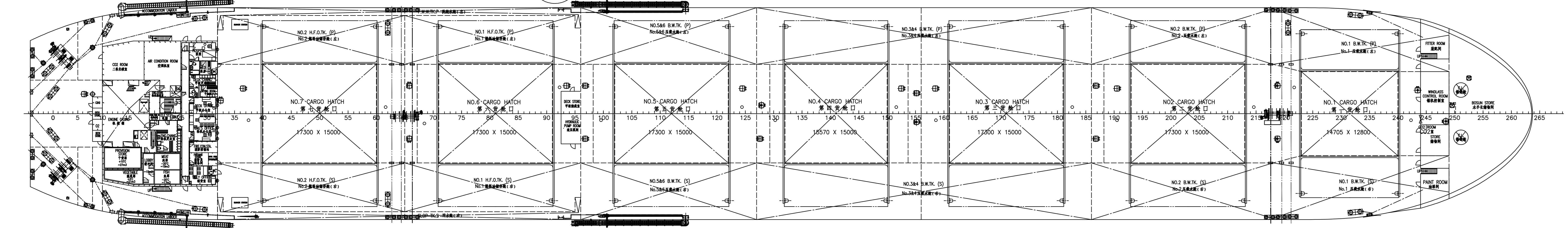
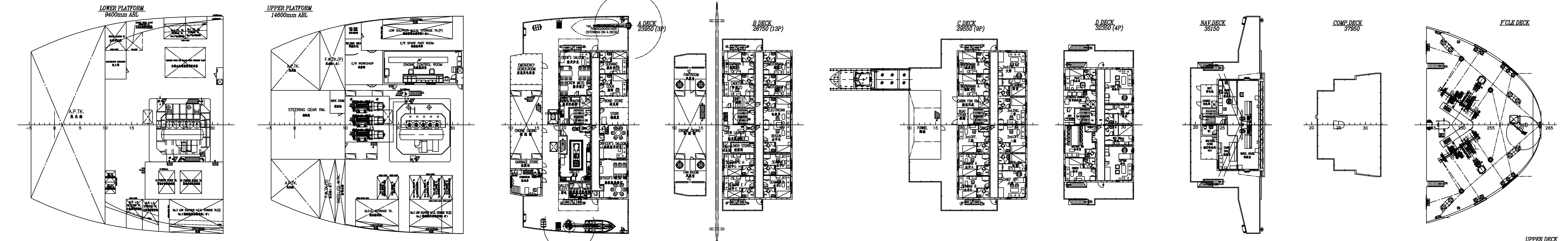
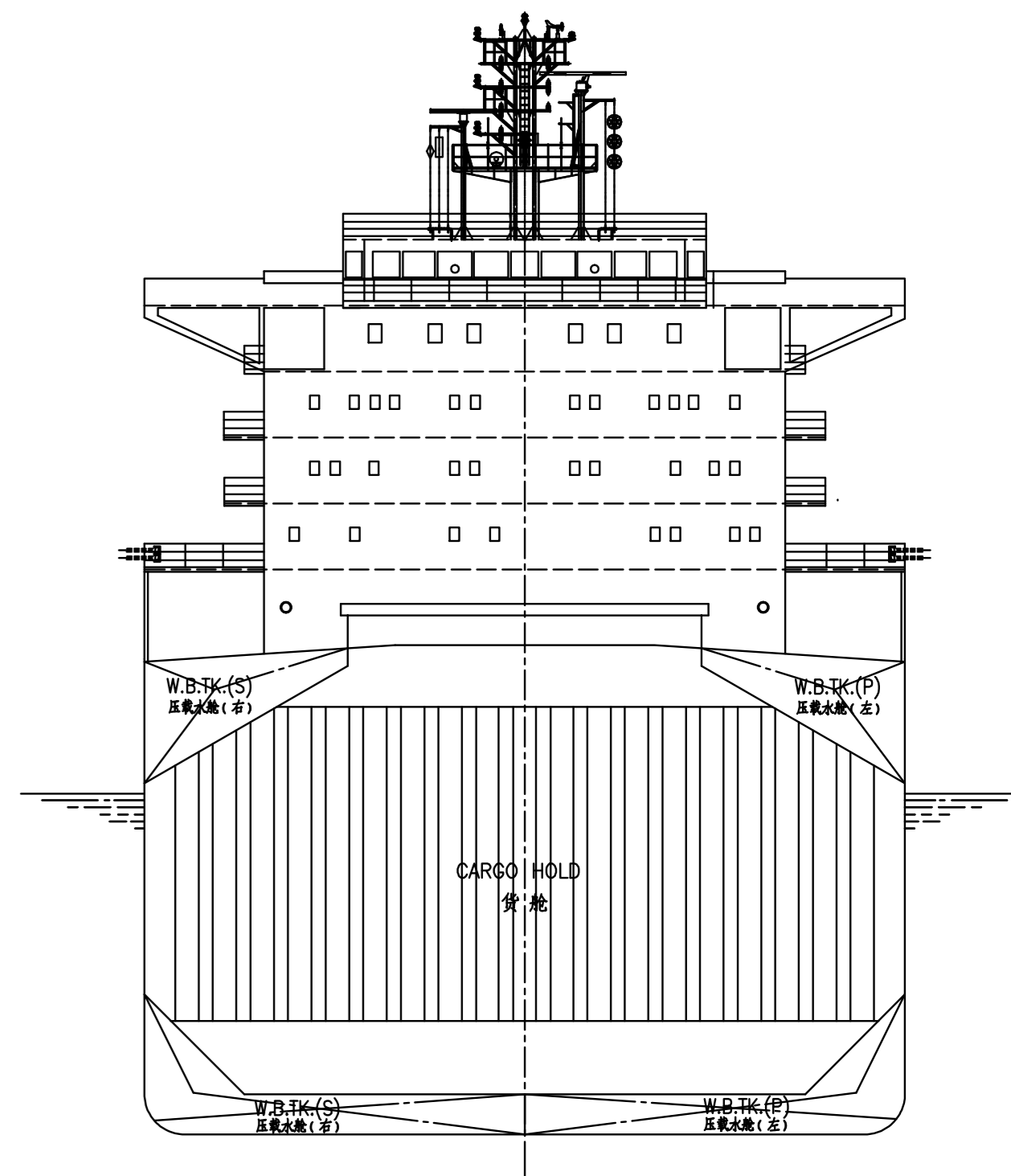
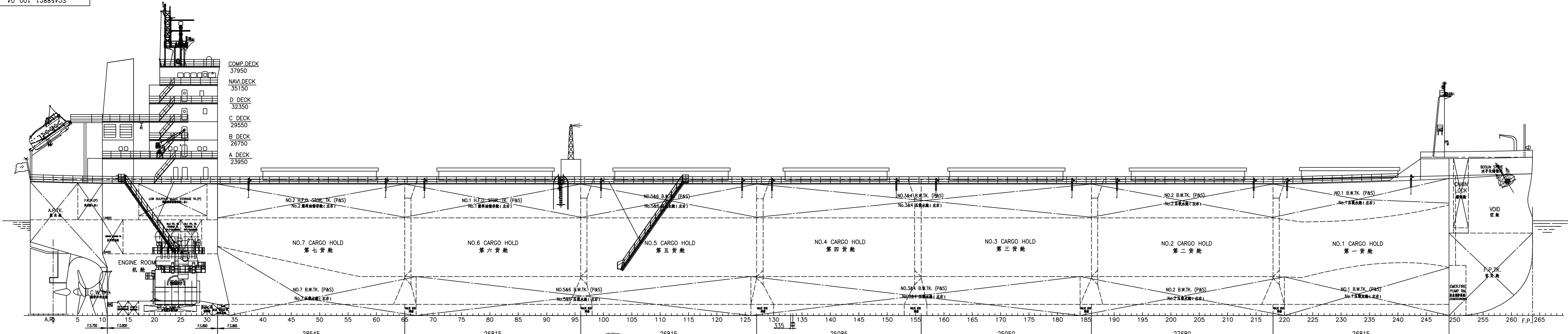


P0-001-19885-05



PRINCIPAL PARTICULARS

主要尺度及数据

LENGTH O.A.	总长	abt. 229.00 m
LENGTH B.P.	垂线间长	225.50 m
BREADTH (M.L.D.)	型宽	32.26 m
DEPTH (M.L.D.)	型深	20.05 m
DESIGNED DRAFT	设计吃水	12.20 m
SCANTLING DRAFT	结构吃水	14.45 m
DEADWEIGHT	载重量 (AT SCANTLING DRAFT)	abt. 82,000 t
MAIN ENGINE	主机	MAN B&W 5560ME-C8 (Tier II) X 1set
SERVICE SPEED	服务航速 (AT C.S.R., T=12.2m WITH 15RS.M.)	14.1 knots
ENDURANCE	续航力	abt. 22,000 n.mile
COMPLEMENT	船员编制	25 P
CLASSIFICATION	船级	LR 100A1 Bulk Carrier, CSR, BC-A (HOLD No.2, 4 & 6 may be empty). ShipRight(CM, ACS(B)), GRAB(20), ESP, LI, YMS. With the descriptive note "ShipRight BMM(F)"

© LMC,UMS,SCM

DETAIL DESIGN	详细设计	80000MT BULK CARRIER	SC4588G1-100-04
DESIGNER	设计者	80000MT BULK CARRIER	HULL NO. W1022-1023
GENERAL ARRANGEMENT PLAN	总布置图		
SCALE	比例		1:100
DATE	日期		1/11

图例 AREA: 1.25 m²